



# You are Important to Us and to Your Family.

## ASSURED LIFE ASSOCIATION

Assured Life Association has partnered with Life Line Screening, the nation's largest provider of preventive health screenings, to bring our members convenient, painless, and non-invasive health screening services.

### Four Vital Screenings for \$135 Add Osteoporosis screening for only \$10



**Carotid Artery Disease:** an ultrasound is performed to screen the carotid arteries (a pair of blood vessels in the neck that deliver blood to your brain) for buildup of fatty plaque. This buildup, called atherosclerosis, is one of the leading causes of stroke.



**Atrial Fibrillation (AFib):** a 6-lead electrocardiogram (EKG) is performed by placing sensors on the arms and legs to screen for Atrial Fibrillation. AFib can lead to blood clots, stroke, and heart failure, and other heart-related complications.<sup>1</sup>



**Abdominal Aortic Aneurysm (AAA):** an ultrasound is performed to screen the abdominal aorta for the presence of an enlargement or aneurysm. AAA can lead to a ruptured aortic artery, which is a serious medical emergency.



**Peripheral Arterial Disease (PAD):** an Ankle-Brachial Index (ABI) test is performed using blood pressure cuffs on the arms and legs. It is important to screen for PAD because it increases the risk of coronary artery disease, heart attack, or stroke.<sup>2</sup>

<sup>1</sup>American Heart Association <https://www.heart.org/en/health-topics/atrial-fibrillation>

<sup>2</sup>American Heart Association <https://www.heart.org/en/health-topics/peripheral-artery-disease/about-peripheral-artery-disease-pad>

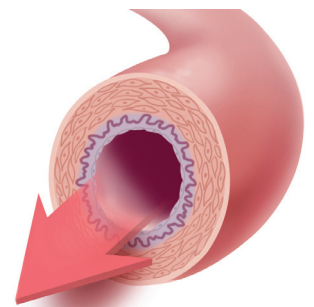
**Call toll-free to schedule: 1-888-763-4161**

**Priority Code: BDHW211**

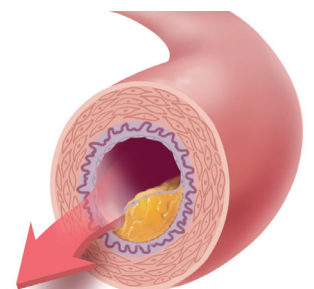
**Online: [lifelinescreening.com/ala](https://lifelinescreening.com/ala)**



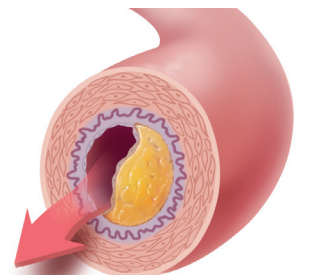
**Plaque buildup can lead to cardiovascular disease, stroke and aneurysms.**



**A normal artery allows blood to flow through easily.**



**As you age, arteries can become partially blocked.**



**Plaque buildup reduces your blood flow and can be dangerous if left untreated.**