

2022 SCHOLARSHIP RECIPIENTS



TOP SCHOLARSHIP AWARD RECIPIENT

BENJAMIN MOUSSEAU

AZ Grand Canyon Chapter 1002

\$2,500 Arthur J Barrett, Jr Memorial Scholarship

"What is or will be your major field of study in college? Explain the importance of your field of study in today's society. If you have not selected a major field of study, what interests will influence your decision more towards one field of study over another? Describe the importance of that field of study in today's society."

When I tell people my major - Earth and Planetary Sciences (EPS) - I often get confused looks. It's understandable; "Earth science" sounds vague and overreaching, like an actor trying to play all the roles in a single film. How can one branch of science encapsulate everything that happens on our planet? But it's precisely this big-picture approach that makes EPS so relevant to the challenges society faces today.

First, to dispel the confused looks, EPS is the study of global processes such as plate tectonics, atmosphere and ocean currents, biosphere-geosphere interactions, and energy systems. It is certainly a fun topic to study - volcanoes and oceans are cool - but to me, EPS represents something bigger than its humble role in academia might suggest.

For one, EPS is crucial for society's effective response to climate change. To be able to face the problems of a warmer world, we need to know exactly what a changing climate is going to do, and to whom. Can Rwandan goatherds expect more livestock deaths? Does my grandparents' municipality have enough water stored to outlast the drought in the American Southwest? While these seem like hyperlocal questions, they all ultimately depend on a fundamental understanding of interconnected global processes. Changing ocean currents on one side of the world can cause catastrophic floods on the other. I hope that by studying and applying EPS, I

can help solve these problems posed by a warmer world.

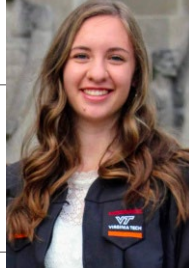
But my motivation for studying EPS doesn't stop there. Not only does EPS elucidate the risks of climate change, but it also lights a path forward. After all, the flip side of fossil fuels is that through them, humanity has been able to harness more energy than ever before, and in so doing vastly improve the lives of billions. Clearly, we don't want the floods, fires, and ocean acidification, but we do want the energy. How can we solve this? The answer lies in global energy flows. For all the energy stored in coal reserves worldwide, the Sun delivers the same amount to the Earth about every six years. And when the light reaches us, a magical thing happens: the energy divides up into different forms, some as wind, some as rivers, some as the very grass we step on. EPS can quantify these flows, and by understanding where they are strongest, we can harness them to complete the energy transition we need to protect our society's present and future.

I could go on about the relevance of EPS - after all, I'm from Washington State, which witnessed the deadliest volcanic eruption in American history just a few decades ago and is expecting a colossal "megathrust" earthquake by my grandchildren's generation. EPS is needed to protect society from both of these realities. But it ultimately boils down to this: we all live on the same dynamic and beautiful ball of rock, and to thrive in this shared home, we must truly apprehend its complex workings. ■



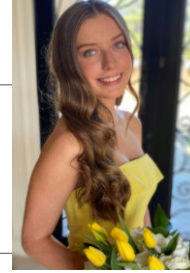
SARAH ALAGOOD

OK Redbud Chapter 1005
\$500 Daniel J Collyar & McCabe Family Memorial Scholarship



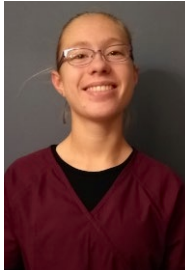
REBECCA ALANKO

VA Dogwood Chapter 1008
\$1000 Danish Brotherhood Endowment Scholarship



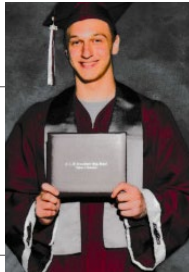
ABIGAIL ANDERSON

OK Redbud Chapter 1005
\$500 Assured Life Association Endowment Scholarship



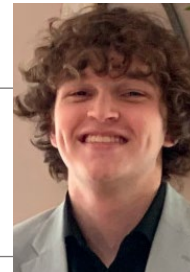
RACHAEL BARONE

MI Wolverine Chapter 1015
\$500 Daniel J Collyar & McCabe Family Memorial Scholarship



DAVID MICHAEL BIERMAN

CO Denver Camp 1
\$500 Assured Life Association Endowment Scholarship



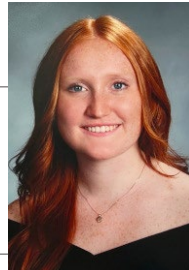
WESLEY BLACKWOOD

AL Yellowhammer Chapter 1001
\$500 Assured Life Association Endowment Scholarship



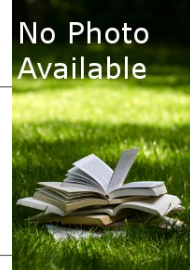
RILEIGH CLARKE

CA DBIA Dannevang Lodge 126
\$1500 Carl & Viola Hansen Scholarship



CARA COLBERT

PA DBIA Viking Lodge 342
\$500 Assured Life Association Endowment Scholarship



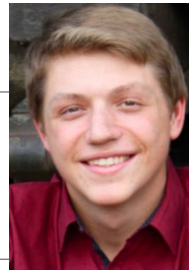
RYAN CORFIXSEN

MI DBIA Detroit Lodge 227
\$500 Longmont Building Camp 31



BROOKE CRABTREE

DBIA District Lodge 624
\$500 Robert Weitzel Memorial Scholarship



HUNTER CROMWELL

MT Big Sky Chapter 992
\$500 Tim North Scholarship



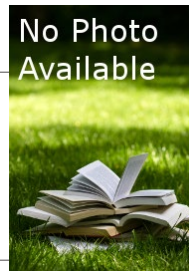
SARAH DREES

OH Cardinal Chapter 1004
\$1000 Magnolia Camp 92 Scholarship



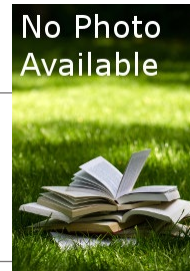
ERYNN GERLACH

SD Mount Rushmore Chapter 1018
\$1000 Danish Brotherhood Endowment Scholarship



KENDALL GOLDENSON

AZ Grand Canyon Chapter 1002
\$500 Pikes Peak Camp 005



ALISON GRANT

TN River Pearl Chapter 1013
\$500 Assured Life Association Endowment Scholarship



ADDISON HENSLEY

KY Thoroughbred Chapter 1021
\$500 James D. Wiederstein Scholarship



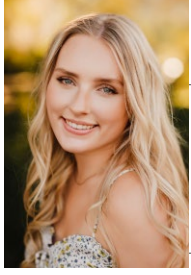
KATE HICKS

MT Big Sky Chapter 992
\$500 Assured Life Association Endowment Scholarship



BROOKE JENSEN

CO DBIA Sletten Lilley Lodge 261
\$500 Cactus Country Camp 976 Scholarship



AINSLEY JORGENSEN

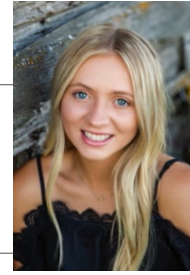
OR DBIA Centennial Lodge 348
\$1000 Axel Skelbeck Scholarship



No Photo Available

EMILY KING

SC Palmetto Chapter 1017
\$500 Assured Life Association Endowment Scholarship



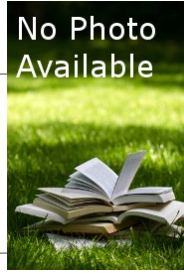
JOCELYN KLITZKE

SD Mount Rushmore Chapter 1018
\$500 DBIA Fresno CA Lodge 067 Scholarship



ELIZABETH KOSMICKI

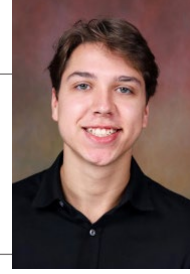
NE DBIA Grand Island Lodge 211
\$500 Assured Life Association Endowment Scholarship



No Photo Available

GRIFFIN KRISTENSEN

CA DBIA Dannevang Lodge 126
\$500 El Camino Camp 925



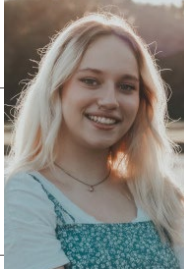
JONATHAN LAVENDER

KY Thoroughbred Chapter 1021
\$500 Assured Life Association Endowment Scholarship



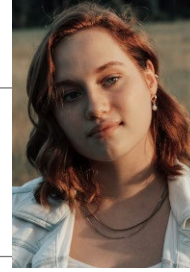
KELLY MORCK

MI DBIA Detroit Lodge 227
\$1000 Danish Brotherhood Endowment Scholarship



ALEXA MOUNTAN

VA Dogwood Chapter 1008
\$1000 Danish Brotherhood Endowment Scholarship



EMMALINE MOUNTAN

VA Dogwood Chapter 1008
\$1000 Danish Old Peoples Home Scholarship



ANNE-CLAIRE MOUSSEAU

AZ Grand Canyon Chapter 1002
\$1000 FK Holm Scholarship



No Photo Available

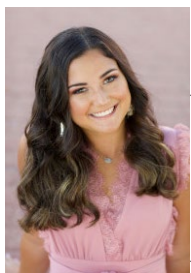
NICOLAS ORLANDINO

CO Denver Camp 1
\$1000 Supreme Camp Of The American Woodmen Scholarship



ELENA PETERSEN

DBIA District Lodge 626
\$500 Assured Life Association Endowment Scholarship



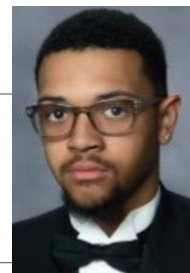
ABBY RODOSKY

IL DBIA Dwight Lodge 34
\$500 Pendleton Camp 41



EMILY ROE

IN Crossroads Chapter 1020
\$1000 Danish Brotherhood Endowment Scholarship



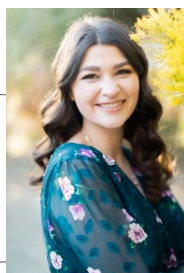
ELIJAH SCARBROUGH

TX SCAW Dallas Camp 90
\$500 Tanya Unrein Scholarship



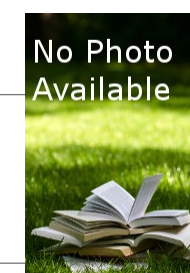
LOGAN THOMSEN

MI DBIA Greenville Lodge 70
\$1000 Danish Brotherhood Endowment Scholarship



ALEXIS VAN HOWE

CO Denver Camp 1
\$1000 Jack L and Janet E Cloud Scholarship



No Photo Available

NINA WALKER

KY Thoroughbred Chapter 1021
\$500 Rocky Mountain Camp 999